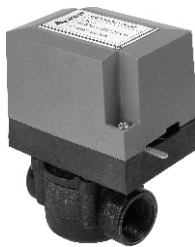


**FEATURES**



3WAY VALVE

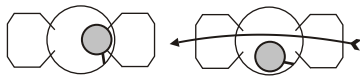


2WAY VALVE

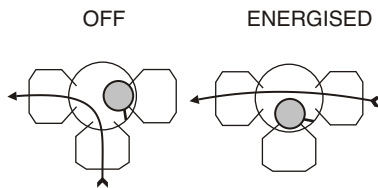
- Unique port design to ease installation and piping connections
- S.G. Iron body
- Long life synchronous motor drive with spring return
- Available with two way and three way connections
- Suitable for two position control of hot and chilled water in fan coil units and other small zone units
- Auto/Manual lever
- Sizes 20 mm and 25 mm dia

**BENEFITS**

- Easy installation
- Easy operation
- Highly reliable
- Economical
- Easy maintenance



2WAY VALVE



3WAY VLAVE

Normally Closed Port - Coil Port  
 Normally Open Port - Main Port  
 Center Port - Bypass Port

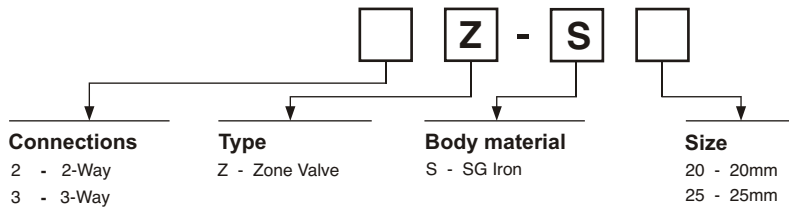
**TECHNICAL DATA**

**Materials**

- Valve body : S.G. Iron
- Spindle : Brass
- Spindle packing : O-ring (nitrile)
- Shutoff ball : Neoprene

- Rated pressure : 10 bar
- Fluid temp limits : 5°C to 110°C
- Rated power supply : 230 V, 1 Phase, 50 Hz
- Absorbed power : 6 W
- Mounting position : Horizontal or vertical  
(Do not mount with motor downwards)
- Protection : IP 20

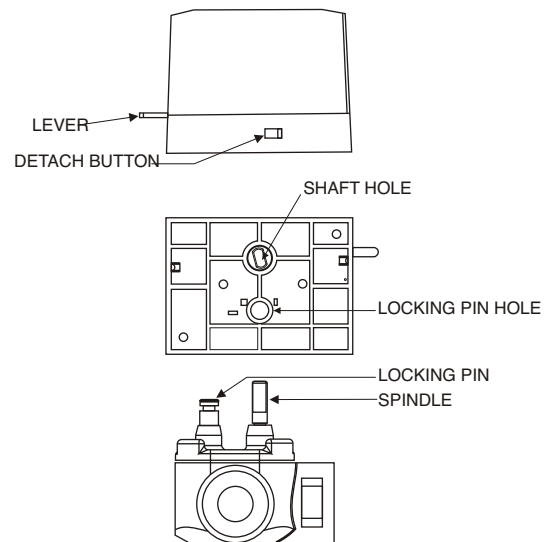
## MODEL DESIGNATION



## INSTALLATION AND COMMISSIONING

- Detach the actuator from the valve body by pressing the detach button & pulling the actuator upwards
- While installing valve ensure that the position of valve and its ports complies with the hydronic circuit
- Before commissioning, install the actuator by putting shaft in the shaft hole then turning the actuator clockwise & putting the locking pin in the pin hole & pressing it.
- Bring the ball to the mid position by using the manual operating lever. The system can now be flushed.
- The first time the valve is operated electrically, the manual operating lever of the actuator will transfer to the automatic position.

Note : It is not possible to use manual lever on 3way valves to close the by-pass port.



## DIMENSIONS

Type	DN (BSP)	A	B	C	D	E	F
2ZS 20	3/4"	80	55	40	90	67	130
3ZS 20	3/4"	80	68	40	90	67	130
2ZS 25	1"	96	58	40	90	67	130
3ZS 25	1"	96	82	40	90	67	130

All Dimensions in mm.

