

DATA LOGGERS



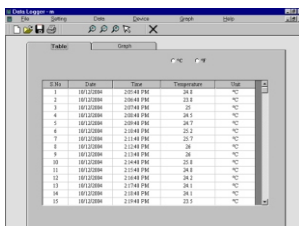
TEMPERATURE DATA LOGGER



TEMPERATURE & RH DATA LOGGER

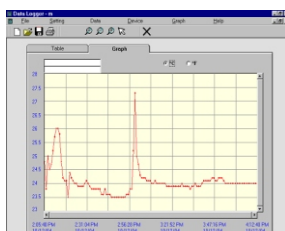


PC INTERFACE CABLE



S.No.	Date	Time	Temperature	Humidity
1	10/12/2009	2:01:48 PM	24.3	52
2	10/12/2009	2:04:48 PM	23.8	52
3	10/12/2009	2:07:48 PM	25	52
4	10/12/2009	2:10:48 PM	24.5	52
5	10/12/2009	2:13:48 PM	24.7	52
6	10/12/2009	2:16:48 PM	25.2	52
7	10/12/2009	2:19:48 PM	25.7	52
8	10/12/2009	2:22:48 PM	26	52
9	10/12/2009	2:25:48 PM	26	52
10	10/12/2009	2:28:48 PM	25.2	52
11	10/12/2009	2:31:48 PM	24.2	52
12	10/12/2009	2:34:48 PM	24.1	52
13	10/12/2009	2:37:48 PM	24.1	52
14	10/12/2009	2:40:48 PM	24.1	52
15	10/12/2009	2:43:48 PM	23.5	52

DATA TABLE



GRAPHICAL DATA

FEATURES

- Wide range - temperature, RH, voltage, event
- Small size, portable, low cost
- On-line and Off-line modes of operation
- Built-in clock
- Stand-alone, long operational life
- Re-usable device, replaceable battery
- Programmable start/stop time and recording interval
- Non-volatile solid state memory up to 16 K sample point storage capacity
- Easy and instant connection to PC with interface for programming and data download
- Easy to set up windows based software package
- Analysis of data in tabular and graphical format and export to spreadsheet/ word processing programs
- Zoom in facility
- Log, store, retrieve, share, transfer and print data.

BENEFITS

- Rugged, maintenance free, long life
- User friendly, easy to program
- Data retention even in case of battery failure/replacement
- Easy data sharing and transfer
- Simplified record keeping
- Replaces cumbersome and costly strip-chart recorders

TECHNICAL DATA

Housing material	:	PP / ABS
Size	:	5.5 x 3.5 x 1.8 cms
Weight	:	30 gms
Temperature	:	-30 to + 70° C with $\pm 1^\circ$ C accuracy (respective figures for °F)
Relative Humidity	:	0-100% with $\pm 3\%$ accuracy
Voltage	:	0-10 V DC from a transmitter
Event	:	Pulse width of 100 microseconds or more
Battery	:	3 V lithium button cell (CR2430)
PC requirements	H/w	: Minimum P II or equivalent processor with 32 MB RAM and 64 MB free disk space. One free USB port
	O/s	: Windows 98 upwards
Sample rate/interval	:	Adjustable between 2 seconds to 24 hours
Maximum no. of readings	:	16 K
Maximum memory size	:	32 K
Resolution	:	10 bit