

PRESSURISATION UNITS



FEATURES

- Used for pressurising chilled water system in HVAC applications
- Provide make up water to pressurised water system
- Double pump, 1 working + 1 stand-by
- Microprocessor based control panel with dry run protection & duty cycling
- Multistage centrifugal type pumps- quiet, reliable and rugged
- All components, i.e. Pumps, pressure transmitter, pressure gauge, isolation valves, non-return valves interconnecting piping and control panel factory mounted on a compact steel frame.

BENEFITS

- Ensure positive pressure throughout the system thus preventing vapour/air locks
- Automatic operation.
- BMS Compatible

TECHNICAL DATA

Model	:	PSU-225	PSU-245	PSU-290	PSU-2135
Pump					
Type	: Multistage, centrifugal			
Power(KW)	:	0.6	0.75	2.2	2.2
Power supply (AC, 50Hz)	:	230V,1Ph415V, 3Ph.....		
Max flow rate (CMH)	:	2	2	2	2
Max dynamic head (mWC)	:	25	45	90	135
Max. fluid temperature	: 50°C			
Protection	:	IP44 IP55		
Controls					
Pressure Range	: 0 to 10 bar....	 0 to 20 bar.....	
Pressure Differential	: 1 bar			
Control Panel Protection	: IP55			

INSTALLATION AND COMMISSIONING

1. Mount on a PCC foundation
2. Connect water supply to the inlet connection
3. Connect outlet to expansion tank
4. Control Panel's (fig.2) functions are described below

- ① **Set Point** - The Set point of the pressure is set by turning the pressure setting knob. On turning the knob, display starts blinking and shows the set-point. It again shows the actual pressure when it is left idle for 15secs.
- ② **Auto Mode** - Pump switches OFF when the pressure exceeds the set-point and is switched ON, as the pressure goes below (one bar) the set-point. If the pressure is not achieved in 15mins, the pump will switch OFF and after 1min Pump 2 will start to achieve the required pressure.
- ③ **Manual Mode** - Operation can be switched from Auto mode to Manual mode for Pump 1/ Pump 2 by the toggle switch. In manual mode pump operates continuously for 30mins, then stops for 10mins before restarting.
- ④ **Alarm** - A NO contact of relay is provided for the alarm which closes when a alarm is raised. In case of alarm, press reset key to clear alarm or switch OFF & then switch ON the mains.

Dimensions in mm.

	PSU-225	PSU-245	PSU-290	PSU-2135
L	520	1000	1000	1000
W	500	700	700	700
H	550	900	900	1000

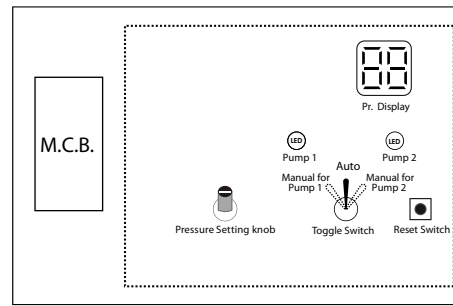


Fig. 2 Control Panel

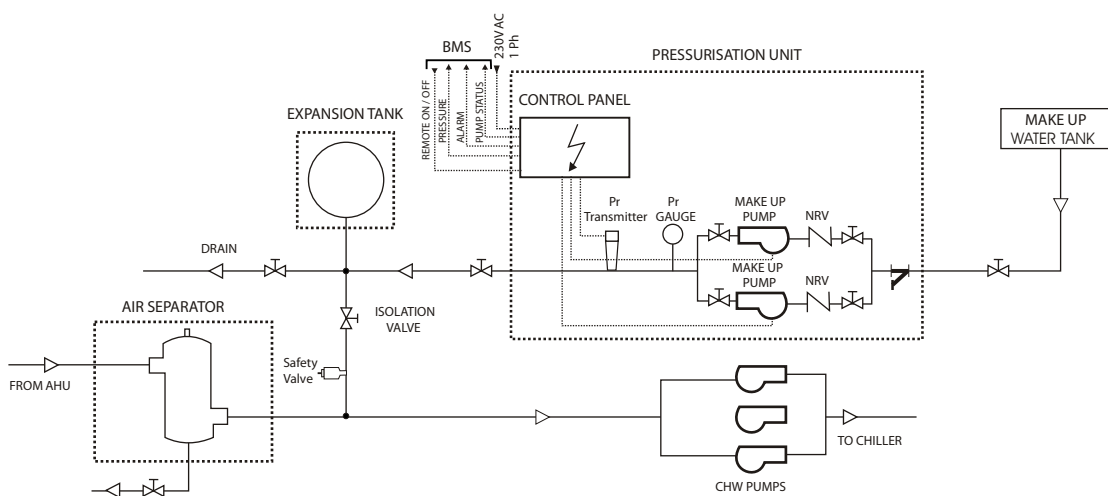


Fig. 3 Schematic drawing of pressurisation unit, expansion tank and air separator.