



FEATURES

- Overload proof
- Lubricated-for-life sintered gears & bearings
- Microprocessor based control circuit
- Reversible direction of rotation
- Manual override
- Rechargeable battery-pack for power-fail operation available as option.



BENEFITS

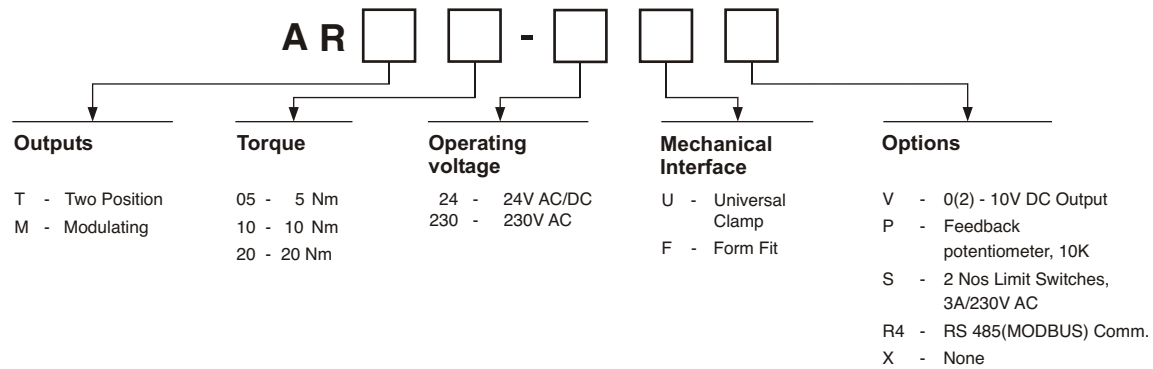
- Long life
- Trouble-free service
- Low power consumption

TECHNICAL DATA

Power supply	:	230V AC, 24/48V AC/DC, $\pm 10\%$
Max. operating power	:	6 VA
Control signal	:	2 & 3 point, 0(2) -10 V DC
Feedback signal*	:	0(2) -10V DC
Rotation	:	95°
Direction of rotation	:	Reversible
Running time	:	120 sec
Overload protection	:	Automatic
Mechanical interface	:	Universal Clamp, Form-Fit
Protection class	:	IP 54
Ambient conditions	:	-10 to +50°C, 0 to 90% RH

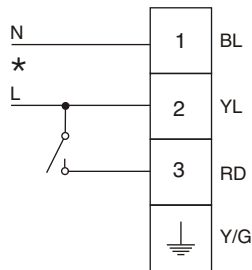
* wherever applicable

MODEL

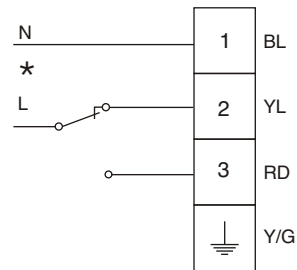


WIRING DIAGRAMS

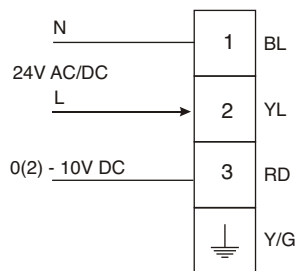
2 POINT



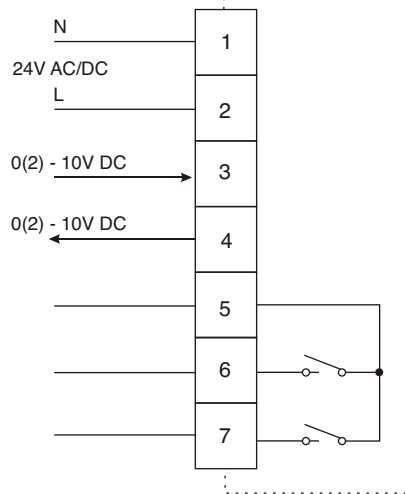
3 POINT



MODULATING



MODULATING WITH FEEDBACK & LIMIT SWITCHES



NOTE

* 230V AC or 24V AC/DC depending on actuator working voltage.